



ATMAIL EMAIL SERVER

Atmail provides a complete email server, messaging and Groupware platform. Designed feature-rich but maintenance light. A complete Linux Exchange alternative, minus the bloat.

Deploy.

Deploy the Atmail software as a complete messaging solution for your company. Complete POP3/IMAP/SMTP mail-server functionality, Groupware features, Web-based administration, Webmail interface and more. All built on a high-performance and reliable platform that includes source-code.

Collaborate.

Atmail provides a complete Calendaring and Groupware platform. Share events, tasks and contacts with other users on the system. Use the Web-based Calendar for scheduling, and connect a variety of desktop and mobile-devices to the Calendar server to sync and share data. Powered by open protocols.

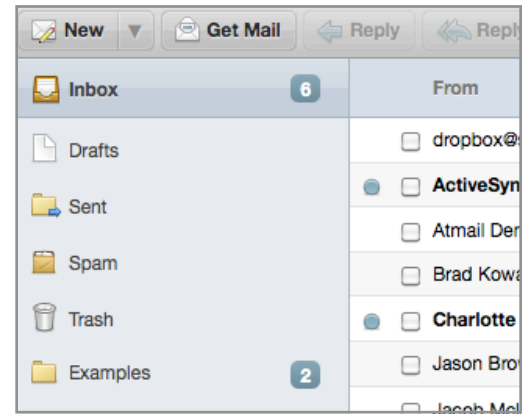
Serve.

Maintenance and administration of the messaging platform is as stress-free as possible. Full Web-based administration is included with streamlined mail-server maintenance, and easy API and administration functions to handle user-accounts. All designed with an emphasis on reliability.

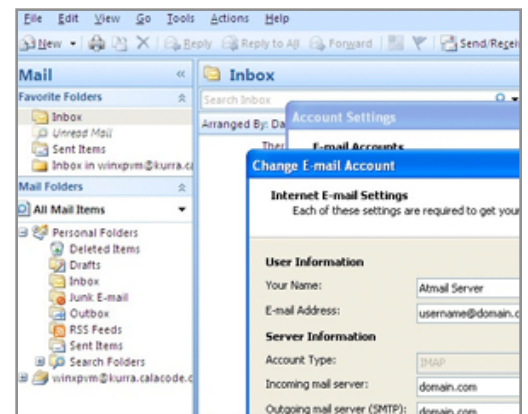
Feature Rich. Maintenance Light.

The Atmail Email Server includes support for SMTP, POP3 & IMAP protocols. Built on open-source the SMTP server is powered by the Exim and Dovecot for POP3/IMAP support. MySQL is used as the database backend for user-accounts, email-forwarding, aliases, autoreplies and more. LDAP support is included for user authentication.

The Atmail Email Server is presented with the intuitive and easy to use Webadmin and WebMail interfaces, making open-source easy.



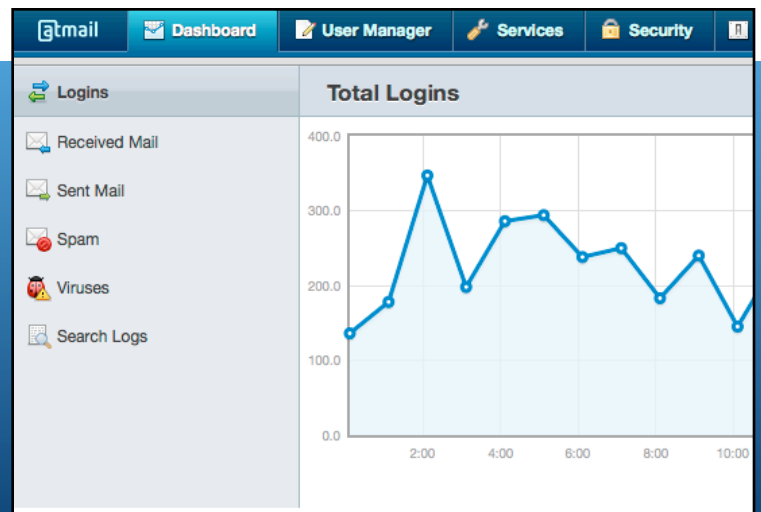
WEBMAIL INCLUDED



USE OUTLOOK WITH ATMAIL

Atmail Email Server Feature Rich. Maintenance Light.

Software Version: 6.x



INDUSTRY USAGE

The Atmail Server is built as a complete messaging platform for any industry. Example usage scenarios include:

Small Business

Use Atmail to provide a complete messaging platform for your company employees and staff. Full mail-server included supporting POP3/IMAP, Webmail client, Calendar and Groupware features. Use desktop clients to communicate with the Atmail server and utilize the Webmail interface to access user accounts. Simple Web-based administration is included.

Internet Service Providers

Provide Atmail as a comprehensive email server solution for your business and clients. Host client email accounts using Atmail and offer Sub-administration for clients to manage their own domains and users. Atmail is designed to scale to millions of user-accounts and offers clustering solutions for high load and availability.

Education

Offer campus-wide email accounts to students and staff using Atmail. Use the Webmail interface as a communication platform for students, and integrate Atmail with an existing LDAP server for authentication.

FEATURE LIST

The Atmail Mailserv includes:

- SMTP, POP3, POP3s, IMAP, IMAPs, SMTP TLS, CalDAV server
- Atmail Webmail client
- Complete Web-administration - Sub-admin, User management, reporting, settings
- Spamassassin Anti-Spam engine with user-level settings
- ClamAV Anti-Virus included for incoming/outgoing messages
- Calendar Server included using the open protocol CalDAV specification
- Complete Web Calendar interface
- Groupware Support for sharing Calendar events, tasks and contacts
- Calendar free-busy support for availability and delegation
- Anti-Virus included for incoming/outgoing messages
- Webmail Address-book with Global and Shared contact support
- DKIM and SPF support for the SMTP server
- Multi-server support and Clustering for high-load and availability
- Easy to use REST API for development integration
- SQL database support for User sessions, settings and data
- LDAP support for user database
- Built on open-source and compliant protocols.
- Full source-code included for customization and control

CLIENTS USING ATMAIL

Atmail Email server supports over 4,000 clients worldwide, and powers over 16 million end-user mailboxes. Examples of clients using Atmail to communicate include:

Software Requirements

- RedHat, Suse, Debian, CentOS, Ubuntu or Fedora Linux server
- Apache Web-server
- PHP 5.1.2+
- Mysql

Contact Details

sales@staff.atmail.com
+61 245 730745 (AU)
+1 773-451-8334 (US)
<http://atmail.com/>

